



VPR-307 – Fuel Level Gauge Instructions

Important Notes

- The installation of gauges may require a Raceworks adapter for the particular sensor and your vehicle. Please check with your local Raceworks dealer if the required adapter is not included in this gauge kit.
- All Raceworks gauges are suitable for use in 12V systems only.
- Raceworks recommends all gauges be installed by a professional to prevent damage to the product.

Contents

In the box	Qty
Fuel Level Gauge	1
Sun-visor	1
Mounting U Bracket	1
Mounting Stand Offs	2
Mounting Flat Washers	2
Mounting Nuts	2
Power Wire (50cm)	1
Daisy Chain Wire (20cm)	1
Sensor/Signal Wire (270cm)	1
Installation Instructions	1

Installation

The gauge may be powered using the included harness which may be connected to either of the white connectors. The second white connector is for daisy chaining additional gauges, meaning that the power, ground and illumination only needs to be connected to one gauge in a series.

Wire Colours

Red – To Ignition or Accessories circuit (+12V)

Black – Ground

Yellow – Constant power (+12V)

White – Illumination (+12V). Do not connect to any wire that operates using a dimmer.

The secondary harness with the yellow connector is for the signal from the temperature sensor.

Mounting

The gauge may be used with or without the included sun-visor. A U-bracket, standoffs, washers and nuts are supplied for mounting the gauge to a panel with a 52mm diameter hole.

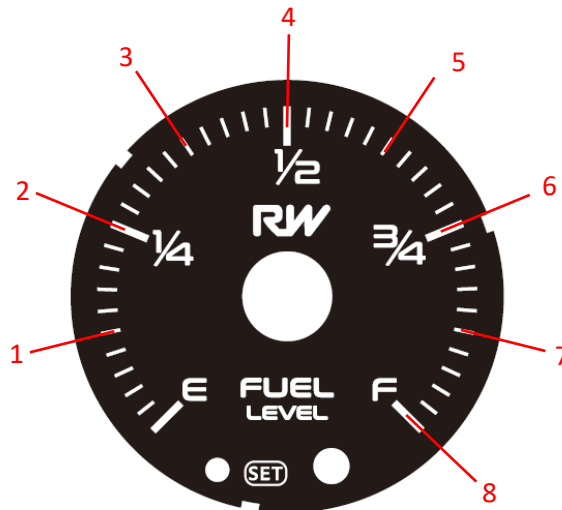
Initial Power Up and setting the Resistance Range

The Raceworks Fuel Level gauge can be programmed to function with 8 different resistance ranges of common fuel level sensors. See below for a list of these ranges/presets –

Preset	Manufacturer	Ω scale									
1	Ford (Pre - 1989)	Dial	Empty	-	1/4	-	1/2	-	3/4	-	Full
	Chrysler	Ω	73	65.1	57.3	49.4	41.5	33.6	25.8	17.9	10
2	Ford (1989 - Present)	Dial	Empty	-	1/4	-	1/2	-	3/4	-	Full
		Ω	16	33.7	51.5	69.2	87	104.7	122.5	140.2	158
3	GM (Pre - 1965)	Dial	Empty	-	1/4	-	1/2	-	3/4	-	Full
		Ω	0	3.8	7.5	11.3	15	18.8	22.5	26.3	30
4	GM (1965 - Present)	Dial	Empty	-	1/4	-	1/2	-	3/4	-	Full
		Ω	0	11.3	22.5	33.8	45	56.3	67.5	78.8	90
5	Auto Meter Sender	Dial	Empty	-	1/4	-	1/2	-	3/4	-	Full
		Ω	240	206.3	172.5	138.8	105	87	69	51	33
6	Mitsubishi Honda	Dial	Empty	-	1/4	-	1/2	-	3/4	-	Full
		Ω	107.5	94.9	82.4	69.8	57.3	44.7	32.1	19.6	7
7	Honda (2001 - Present)	Dial	Empty	-	1/4	-	1/2	-	3/4	-	Full
		Ω	131	116.1	101.3	86.4	71.5	56.6	41.8	26.9	12
8	Japanese Sender	Dial	Empty	-	1/4	-	1/2	-	3/4	-	Full
		Ω	0	15	30	45	60	75	90	105	120

To set the resistance range –

- 1) Before powering up the gauge, hold the button on the front of the gauge.
- 2) While holding the button, power up the gauge/ignition system. Keep holding the button until the complete display flashes blue, and the backlight turns off.
- 3) Release the button, which puts the gauge into calibration mode.
- 4) Using the below legend and above table, press the button until the desired pre-set is selected.

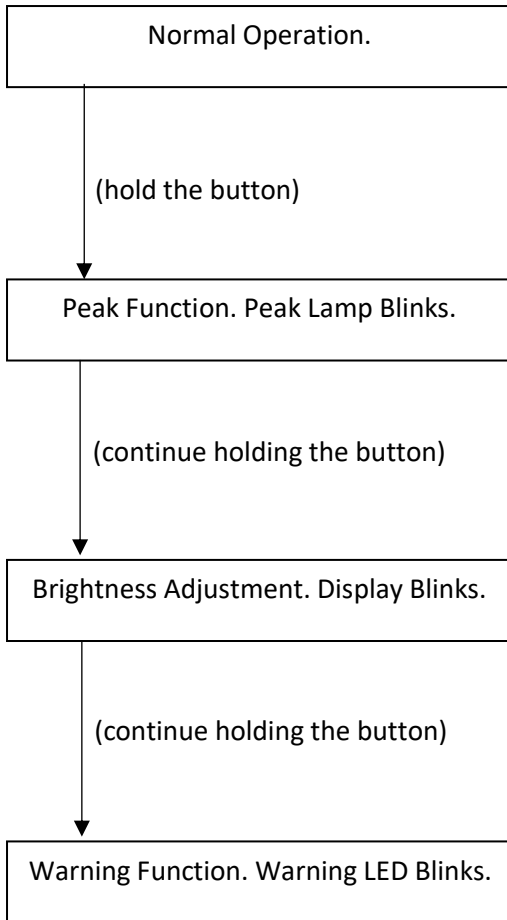


- 5) Allow to stand for 5s. Gauge will then start up as normal and resume normal operation.

Operation

The functions of the gauge all operate through the use of a single button on the face. A short press of the button cycles between the 10 LED colours. A different backlight colour may be saved for day mode and night mode (night mode is when headlights are on or illumination wire is given +12V).

A long press of the button does the following –
Peak->Brightness->Alarm.



Release the button

- 1) Peak stops blinking. The pointer moves to the peak position.
- 2) Long press the button to clear the peak value.
- 3) Allow to stand for 5s. Gauge will resume normal operation.

Release the button

- 1) Brightness stops blinking. The pointer moves to the current brightness setting.
- 2) Short press of the button to change the brightness.
- 3) Allow to stand for 5s. Setting is saved and gauge resumes normal operation

Release the button

- 1) Warning stops blinking. The pointer moves to the warning position.
- 2) Short press of the button to change the warning position.
- 3) Allow to stand for 5s. Setting is saved and gauge resumes normal operation.

Specifications

Operating Range	Empty - Full
Operating Voltage	10-18V
Gauge Lighting Type	10 Colour LED (Dimmable)
Gauge Lighting Colours	Red, Green, Blue, Yellow, Purple, Teal, Cool White, Pink, Warm White and Orange
Mounting Depth	44mm
Total Depth (Including Bezel & Button)	55mm
Mounting hole diameter	52mm

Bapcor
Level 2/327 Ferntree Gully Rd
Mount Waverley, VIC 3149, Australia.