

RWT-023 BRAKE FLARE TOOL

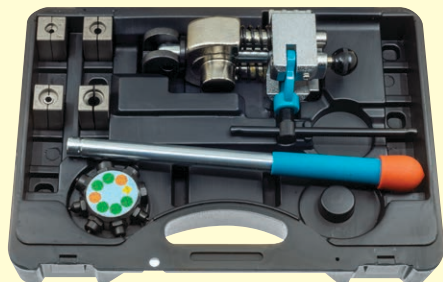
RACEWORKS™
PASSION FOR PERFORMANCE

TOOLS REQUIRED

- RWT 023 – Brake Flare Tool
- Pipe Cutting Tool ■ Vice



RWT-013



RWT-023

STEP 1



Mount the main unit in your vice.

STEP 2



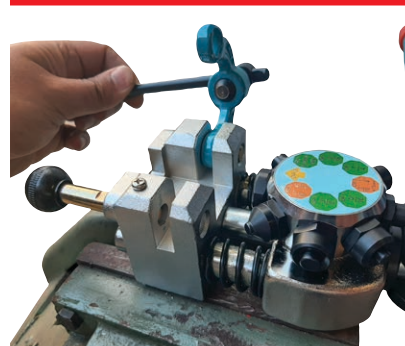
Click the turret into place and push the handle into its holder.

STEP 3



Slide the locking pin back.

STEP 4



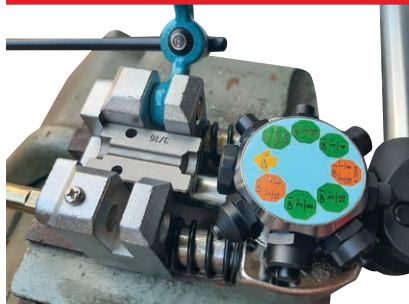
Swing the die press out of the way.

STEP 5



Select the suitable dies for your tube.
In this example we are flaring 3/16" steel hard line for brakes.

STEP 6



Fit the lower die. Note the 45° taper end is used for a double flare.

STEP 7



Use your cutting tool to cut the hard line in the desired location.

STEP 8



Deburr the hard line using the deburring tool on top of the cutter.

STEP 9



Identify which fittings you will be using on your brake line.

Top right are AN-3 tube nuts with integrated sleeves. These require RWT-033 dies.

Bottom left are inverted flare tube nuts which we will use in this example.

STEP 10

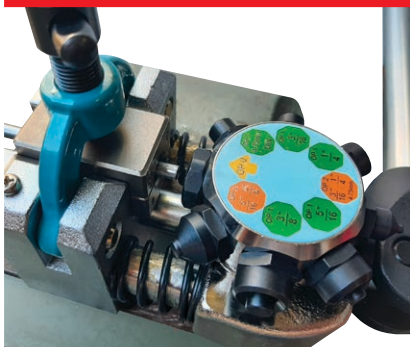


Slide your tube nut onto the line before flaring!

RWT-023 BRAKE FLARE TOOL

RACEWORKS™
PASSION FOR PERFORMANCE

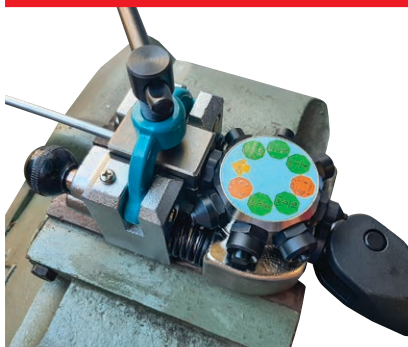
STEP 11



Slide your tube nut back out of the way and insert your line into the dies. Move the die press into place and lock it in with the locking pin.

Do not apply a large amount of pressure at this stage. Set the turret to "Operation 0".

STEP 12



Pull back on your handle, which will seat the line into place, ready for flaring.

STEP 13



Apply a reasonable amount of pressure to the die press by turning the black handle.

STEP 14



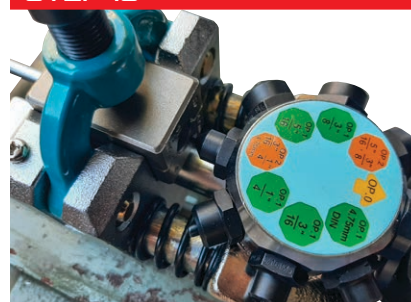
Turn the Turret to "Operation 1".

STEP 15



Pull back on the handle to make your first flare.

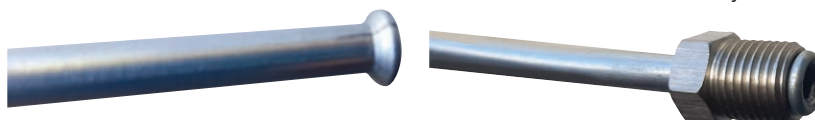
STEP 16



Turn the Turret to "Operation 2". Pull back on the handle and make your second flare.

STEP 17

Disassemble the die press and remove your double flared line.



RWT-023 INSTRUCTIONS (CONTINUED) – BUBBLE / BALL FLARE INSTRUCTIONS

STEP 1



Follow a similar process to the Double Flare, but use the **square** side of the dies, instead of the 45° tapered side.

STEP 2



Setup the tube for flaring using "Operation 0".

STEP 3



Followed by "Operation 1". Note, we don't use Operation 2 for the Bubble Flare.

STEP 4

Disassemble and you have a completed bubble flare!

