

100 / 120 / 140 SERIES HOSE INSTALLATION KIT RWT-012

RACEWORKS™
PASSION FOR PERFORMANCE

TOOLS REQUIRED

- RWT-012 Hose Installation Kit
- Masking Tape
- Hose Cutters
- AN Spanner (adjustable or combination)
- Spray Lubricant



RWT-010



RWT-026



RWT-012



RWT-007BK

EXAMPLE AN-10 HOSE



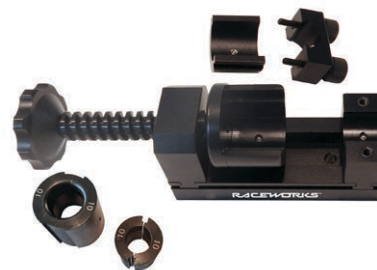
In this example we are assembling an AN-10 Hose.

STEP 1



Wrap Hose with masking tape to prevent braid fraying, and cut to desired length with hose cutters.

STEP 2



Identify the correct hose and fitting holders for the size of hose being assembled.

STEP 3



Install the socket holder into the round housing.

STEP 4



Insert the socket into the socket holder.

STEP 5



Reassemble socket holder.

STEP 6



Remove the hose holder upper clamp and place the hose in. You may leave a single layer of masking tape on the hose, or remove it. In this example, we have removed it.

STEP 7



Clamp the hose holder down, tight!

STEP 8



Turn the handle on the far left, winding the hose into the socket.

100 / 120 / 140 SERIES HOSE INSTALLATION KIT RWT-012

RACEWORKS™
PASSION FOR PERFORMANCE

STEP 9



Once wound in, remove hose holder.

STEP 10



Remove top of Socket Holder, allowing hose and socket to be released.

STEP 11



Ensure hose is seated in correct position, just shy of the fine threads.

STEP 12



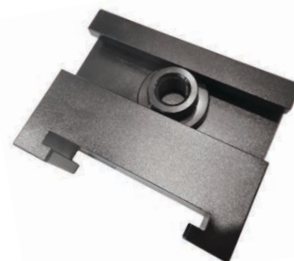
Unwind socket holder off shaft.

STEP 13



Slide hose holder off leaving a bare platform.

STEP 14



Get soft jaws ready, and slide nut into the rear of the left soft jaw.

STEP 15



Slide the soft jaw on and thread the shaft onto the nut.

STEP 16



Slide the right hand soft jaw on to the base.

STEP 17



Secure the hose and socket inside the soft jaws.

STEP 18



Lubricate the threads, before pushing the hose end into the socket, engaging the threads. Make sure you don't cross thread!

STEP 19



Tighten the hose end using your AN spanner, until tight. You will know once it's tight enough as hose will start to rotate. You may hold hose with your left hand and tighten an extra half turn.

STEP 20



Remove from vice, and repeat process on the other end of the hose.