

2.5 BAR BOSCH TMAP SENSOR MAP-055

RACEWORKS™
PASSION FOR PERFORMANCE

SPECIFICATIONS

- Contains a MAP and 130°C Air Temp Sensor
- Aluminium Weld Flange available – ALY-140

CALIBRATION

20kpa = 0.40 V
250 kpa = 4.65 V

ENVIRONMENTAL

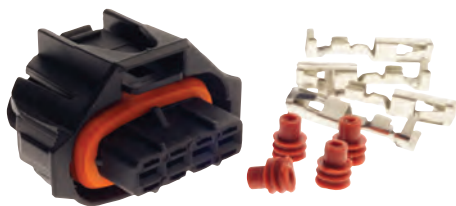
Operating Temperature	-40°C to +130°C
Response Time	1 ms

TEMP. vs RESISTANCE

Temp. °C	Resist. Ohms	Temp. °C	Resist. Ohms
-40	45,313	60	596
-30	26,114	70	436
-20	15,462	80	323
-10	9,397	90	243
0	5,896	100	187
10	3,792	110	144
20	2,500	120	113
30	1,707	130	89
40	1,175	140	71
50	834	150	57

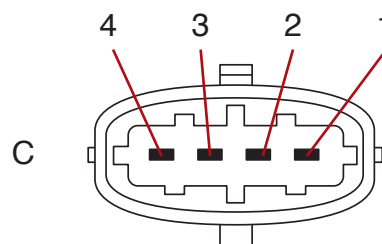
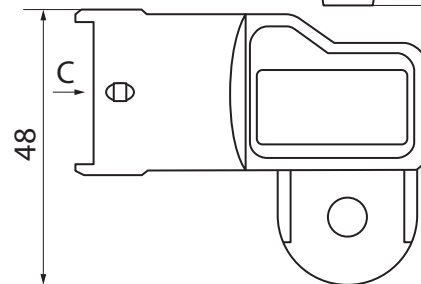
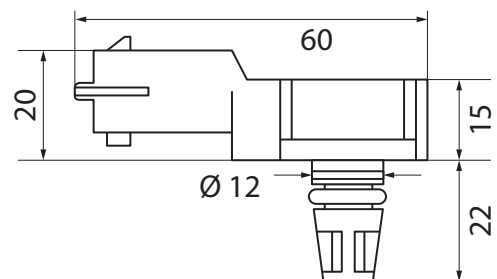
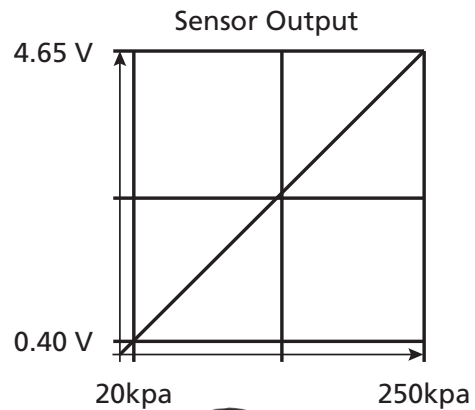
CONNECTOR KIT

CPS-068



WIRING DETAILS

PIN	Description
1	Ground
2	NTC Thermistor
3	+5 V
4	Output Signal



RACEWORKS™
PASSION FOR PERFORMANCE

raceworks.com.au

GET REAL!

GetRealAutoParts.com.au